

Mainstreaming climate change adaptation in WASH

With focus on women and children



In this session...

- Understand the relevance of the concept of mainstreaming climate change adaptation for WASH and different mainstreaming principles and approaches/steps.
- Discuss existing responses and issues in climate change in WASH planning in India on an adaptation/mainstreaming continuum.

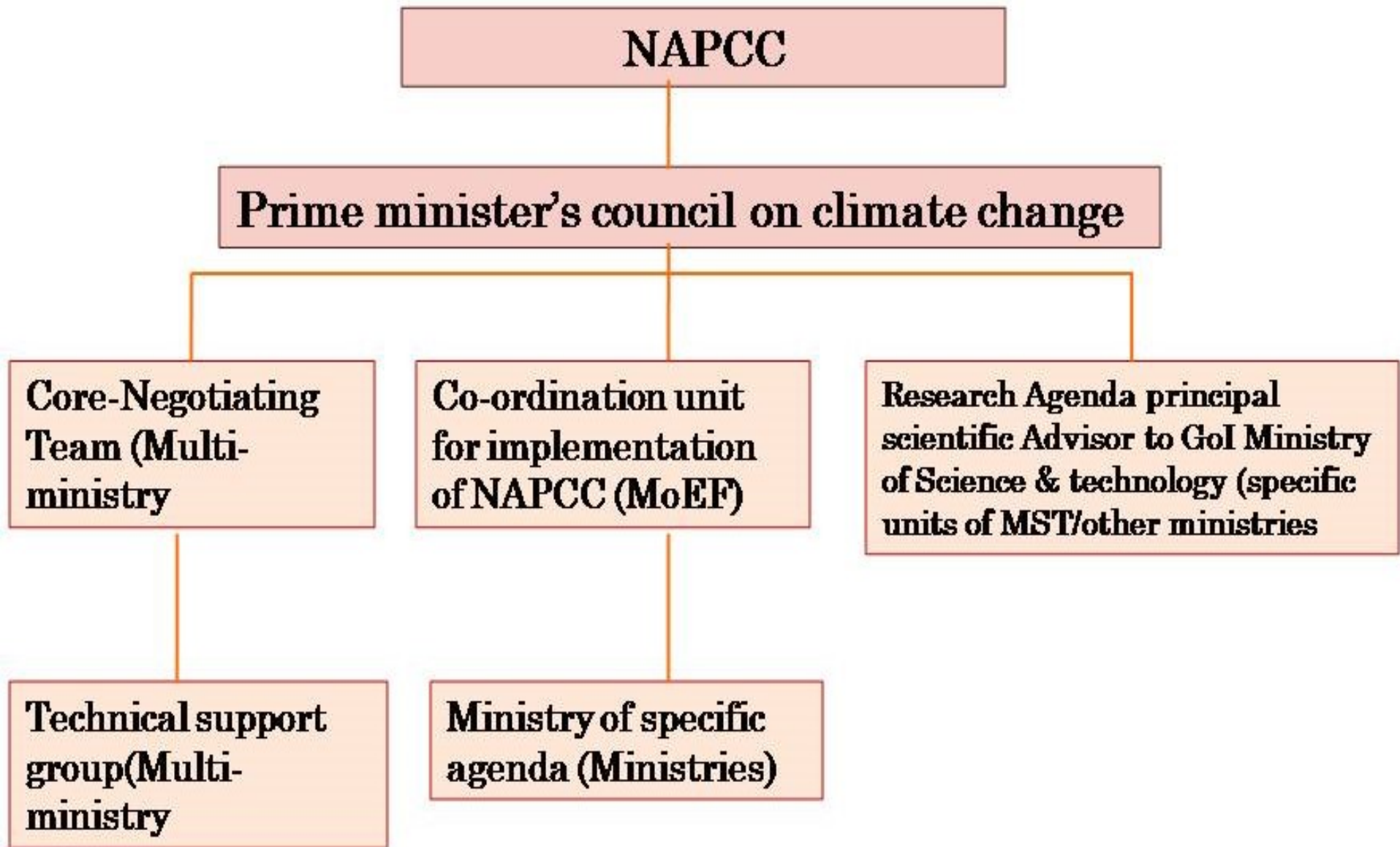


What is climate change adaptation?

- Climate change adaptation refers to the actions that people and institutions make in anticipation of, or in response to, a changing climate. This includes changes to the things they do and/or the way they do them.
- The purpose of climate change adaptation is to create the conditions where people become increasingly able to make informed and appropriate decisions about their lives and livelihoods in a changing climate. The goal is the ability for everyone to thrive in spite of a changing climate.



India: Institutional Mechanism on Climate Change



National Action Plan on Climate Change

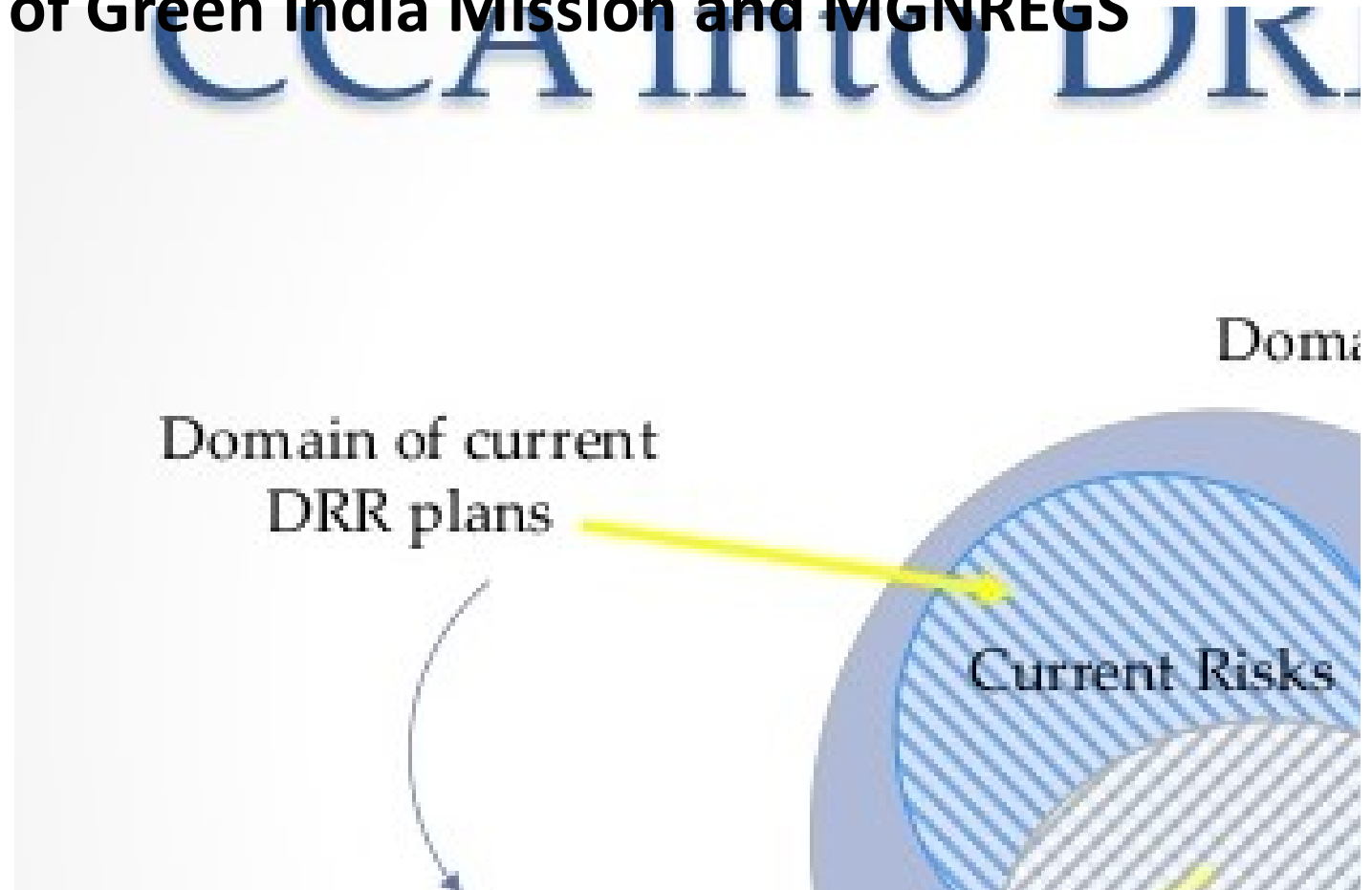
In June 2008, India's National Action Plan on Climate Change (NAPCC) was released, outlining existing and future policies and programs addressing climate mitigation and adaptation (GoI, 2008).

The Plan identifies eight core national missions:

- **National Solar Mission**
- **National Mission for Enhanced Energy Efficiency**
- **National Mission on Sustainable Habitat**
- **National Water Mission**
- **National Mission for Sustaining the Himalayan Ecosystem**
- **National Mission for a "Green India"**
- **National Mission for Sustainable Agriculture:**
- **National Mission on Strategic Knowledge for Climate Change**

Other National and State level Initiatives

- State Action Plans on Climate Change (SAPCCs)
- Five Year Plans
- Convergence of Green India Mission and MGNREGS



SAPCCs

The existing SAPCCs offer opportunities for transformational adaptation and disaster risk reduction that the state can support.

The following principles of adaptation and DRR can be promoted:

- Recognition that adaptation is place and context specific with no single approach for reducing risks (fully appropriate across all settings). Hence avoid making a scheme.
- Recognition that adaptation planning and implementation can be enhanced through complementary actions across levels, from individuals to governments.
- Recognizing and reducing vulnerability and exposure to present climate variability.

SAPCCs

The existing SAPCCs offer opportunities for transformational adaptation and disaster risk reduction that the state can support.

The following principles of adaptation and DRR can be promoted:

- Adaptation planning and implementation at all levels of governance, recognizing diverse interests, circumstances, social-cultural contexts, and expectations.
- Recognition of elements of transformational adaptation and disaster risk reduction and support them in sectoral plans, PIPs etc.
- Planned allocation in state budget for scale up of adaptation & DRR through sectoral action.

Gender related policy recommendations and responses for climate change adaptation in India

- The 2008 National Action Plan on Climate Change (NAPCC) fails to recognise the gender dimensions of climate change, either explicitly or implicitly.
- The national plan has been translated into State Action Plans on Climate Change (SAPCC). As a result of the policy research and advocacy on gender and climate change pursued by organisations, the Federal Ministry of Environment and Forests (responsible for climate change in public policy and programming) has advised State Governments to address gender concerns in State Action Plans on Climate Change.
- State Governments are now beginning to reflect greater gender sensitivity in their SAPCCs. For example, the Uttar Pradesh Climate Change Action Plan discusses links between gender and climate adaptation and mitigation.

Women and Climate Change in the Ganges River Basin

Poor women will bear the brunt in parts of India, Nepal and Bangladesh

How will climate change affect the Ganges Basin?

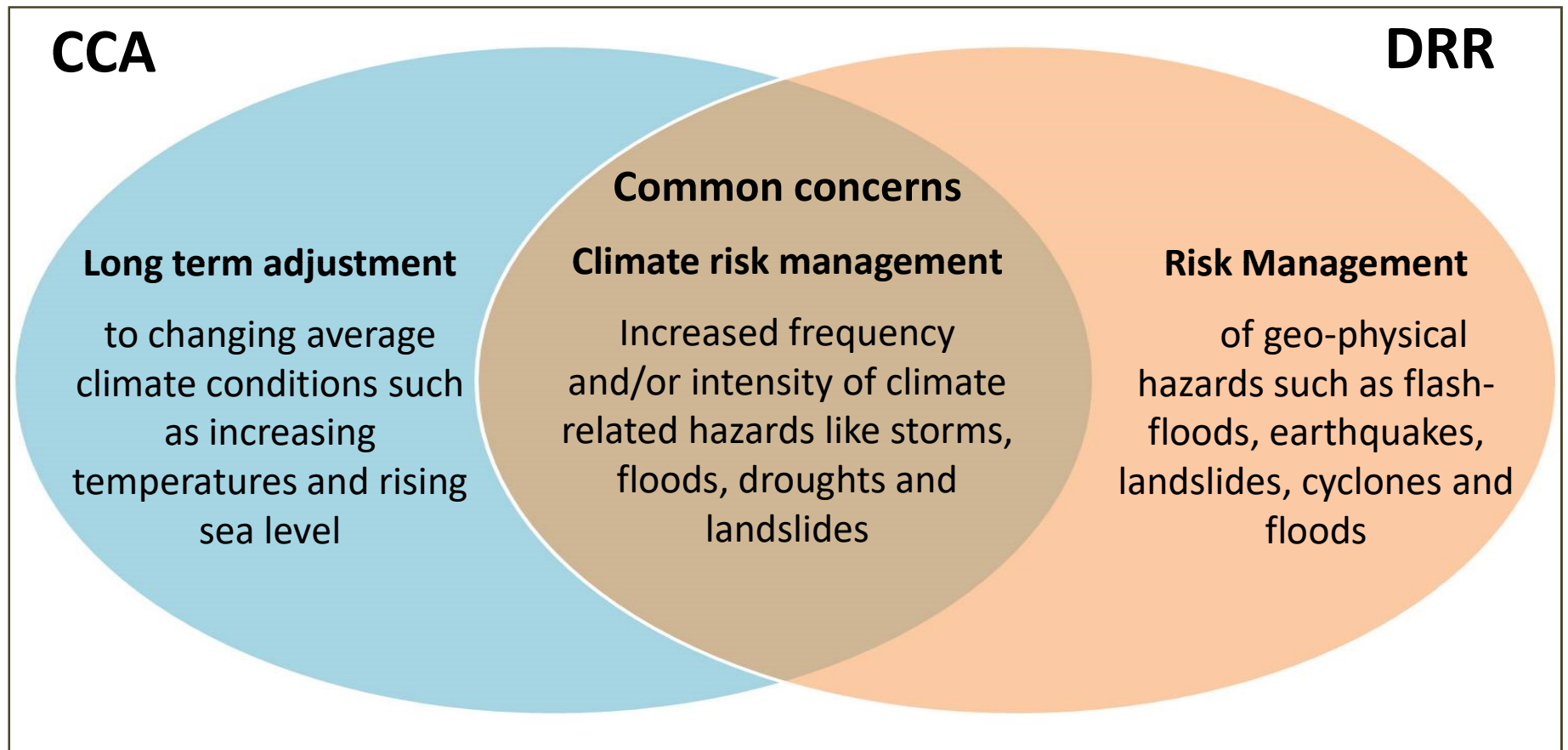


What does this mean for women living in poverty?



Convergence of DRR and CCA

Overlap between DRR and CCA



Mainstreaming DRR and CCA

- DRR is often the first line of protection against weather-related disasters
- For DRR to be efficient, it has to take into account climate-related risks or be climate-smart.
- Increasingly, humanitarian and development practices will have to gain the benefits of bringing together DRR and CCA in a more holistic approach to development programming, in order to maximize the effectiveness and sustainability of efforts and investments made by all stakeholders.
- DRR and CCA measures need to be mainstreamed into the states' development planning to ensure that their strategies, policies, programmes or projects are designed with due consideration for potential disaster and climate change risks

Barriers to mainstreaming DRR and CCA

- bureaucratic organizational processes
- lack of capacity and knowledge
- restricted financial frameworks
- short term thinking
- lack of access to relevant information
- ineffective procedures for retaining organizational memory
- a culture of working in 'silos' (departments)



Suggestions for Way Forward

- Developing a Programmatic approach
- Improving communication
- Improving the institutional framework
- Optimising existing financial arrangements and providing additional resources where needed
- Creating an enabling environment for mainstreaming DRR and CCA
 - Institutional arrangement and capacity
 - Appropriate institutional capacity
 - Departmental Programme/Project Cycle Management
 - Advocacy

Key Learning Points

- Development, disasters and climate change are very closely related.
- DRR and CCA share extensive similarities and common actions.
- Sustainable development will depend upon integration of DRR, CCA and development.
- Mainstreaming should be planned and implemented at all levels and across all sectors of development.
- Mainstreaming is a dynamic process with twin objectives of protecting development as well as ensuring development is not contributing to increase further vulnerability to disasters and climate change.
- Suggestions on way forward