



## **Scenario-based planning**

**Applying a 'climate lens' to state WASH strategies  
and plans through a stepwise approach**

# In this session,

- Understand how to apply a 'climate lens' to WASH strategies and plans to learn about the limitations of existing planning approaches
- Know about the key elements of a climate lens approach
- Learn the benefits of a climate lens approach
- Understand how can scenario-based planning (in entirety or influenced by key ideas) be used as a practical framework/tool to improve WASH planning processes at different levels (from high level strategic to operational) and one in which it is easy to understand climate change.

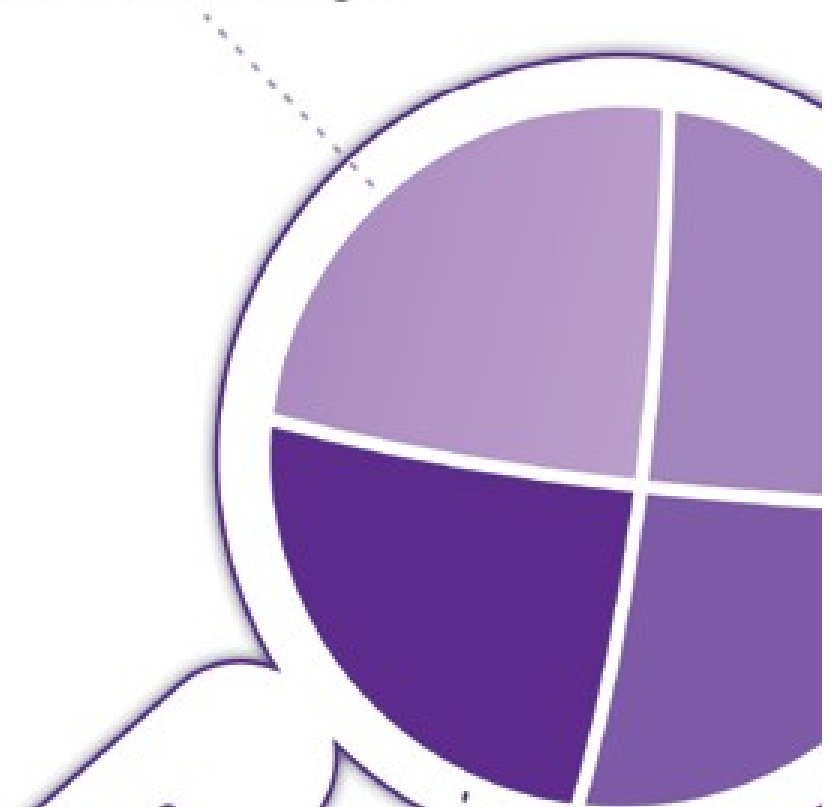


# Elements of a climate lens approach

- Ideally, a 'climate lens' should be applied during the formulation of national WASH sector strategies and plans.
- Can also be applied retrospectively (at state level for example) to identify areas where existing strategies and plans, and implementation priorities and approaches recommended within these, could be strengthened with respect to climate resilience during review and reformulation processes.

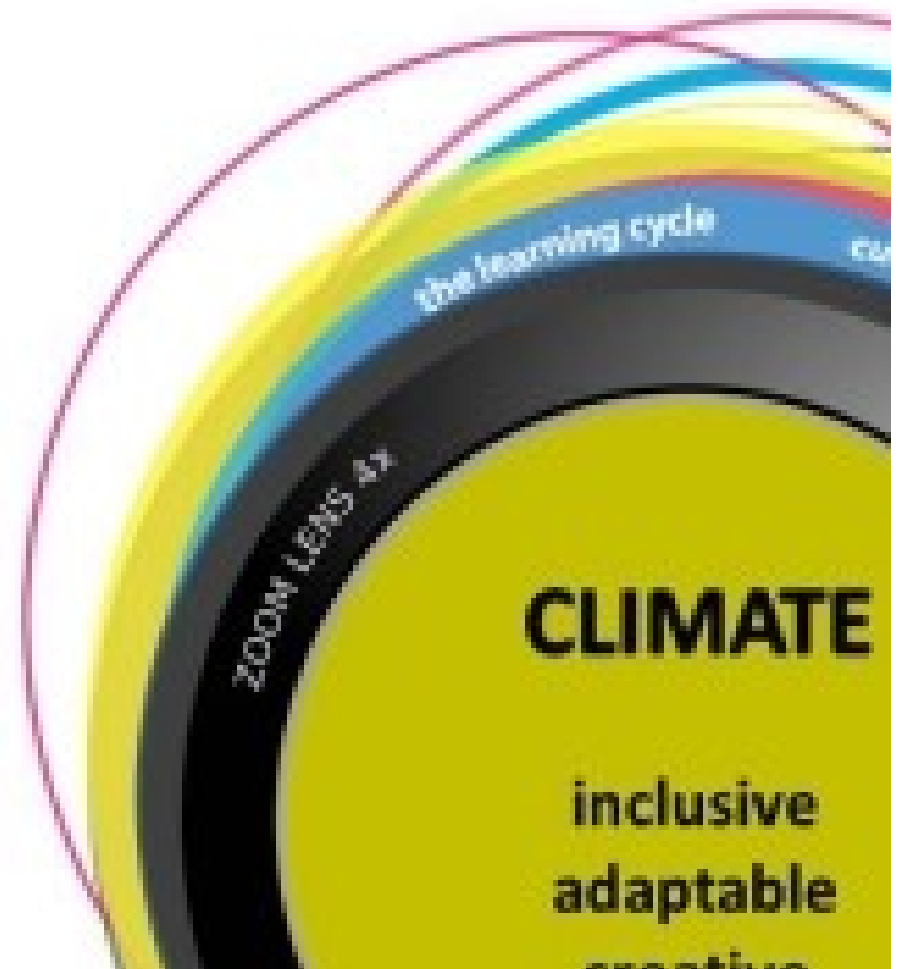
**Vulnerability:**  
How vulnerable is the measure to the impacts of climate change?

**Consic  
of clim  
To wha  
change  
taken ir**



# Climate lens approach

- Ideally, a 'climate lens' should be applied during the formulation of national WASH sector strategies and plans.
- However, there are also many benefits in applying this retrospectively (at state level for example) to identify areas where existing strategies and plans, and the implementation priorities and approaches recommended within these, could be strengthened with respect to climate resilience during review and reformulation processes.



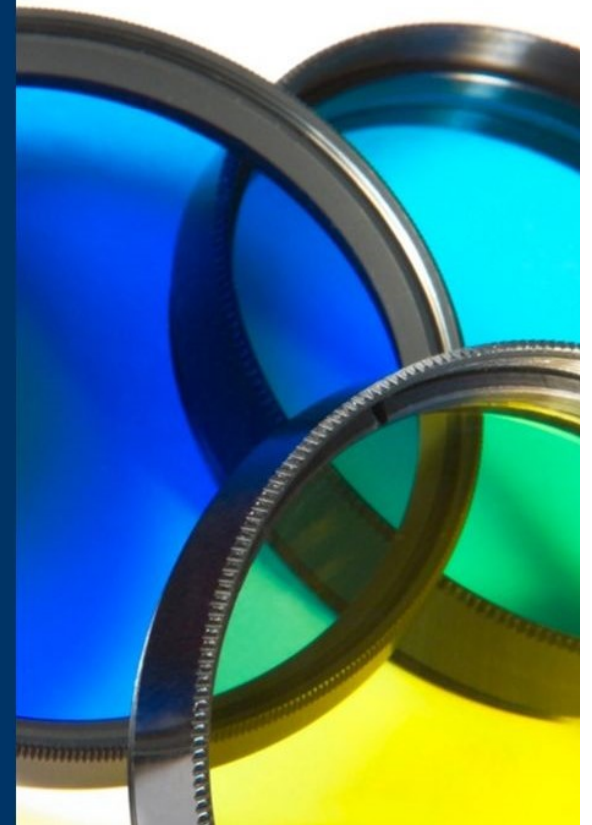
# Climate lens approach

With respect to national/state WASH strategies and plans it can serve to examine the following:

- To what extent have climate risks already been taken into account?
- How vulnerable are strategies and plans to the impacts of climate change?
- Does the strategy or plan inadvertently increase vulnerability to climate change?
- Can strategies and plans be adjusted to better take into account the risks posed by climate change?

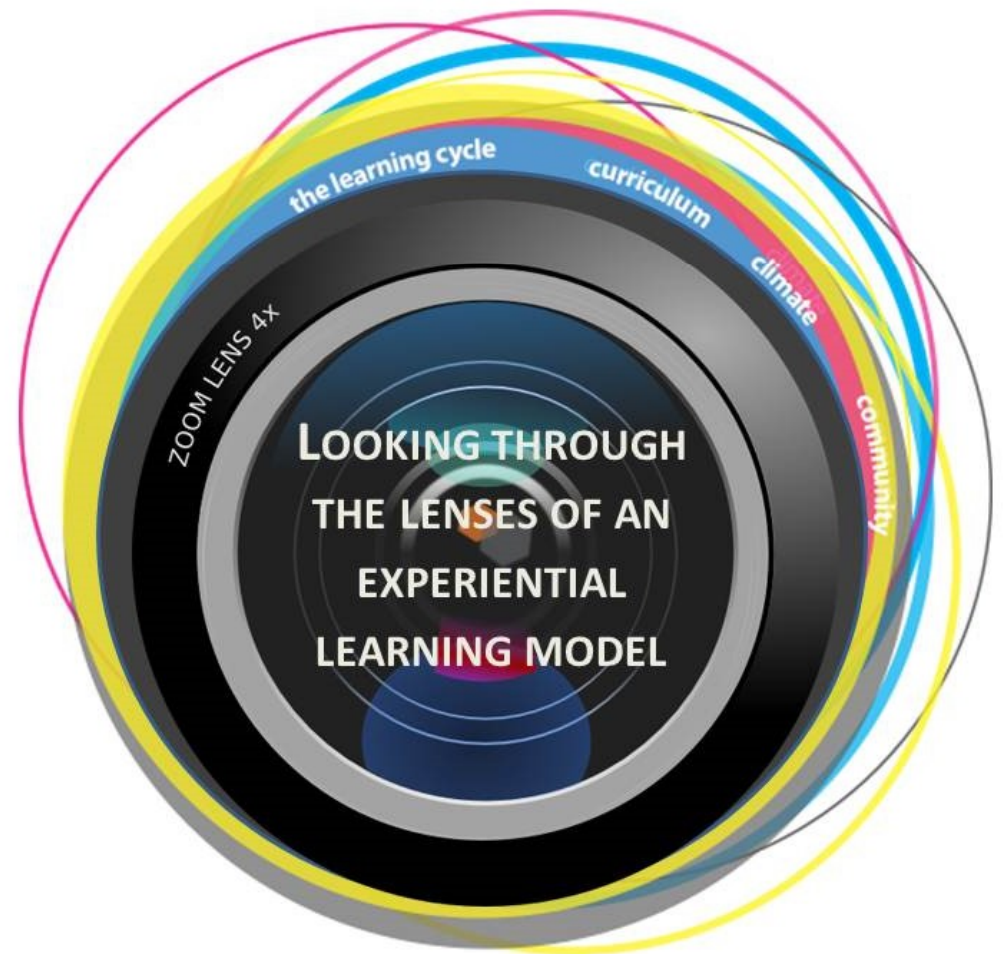
Put a hazards and climate lens on planning efforts

- Land Use
- Transportation
- Natural Resources
- Hazard Mitigation
- Climate Adaptation



# Benefits of climate lens approach

- Ensure national/state WASH strategies, programmes and plans are aligned with existing national climate change adaptation and climate-related priorities and actions
- Ensure vulnerabilities and risks arising from climate variability and change are considered in national/state WASH strategies, programmes and plans, and subsequent implementation
- Strengthen and supplement country/state analyses by incorporating climate change considerations and ensuring measures are responsive to the impacts of climate variability and change
- Assist with the prioritisation of measures by identifying children and their communities living in high-risk locations, and targeting investments to areas where the needs are most pressing



# Benefits of climate lens approach

- Provide a foundation to ensure that subsequent programming and implementation incorporates considerations of climate risks
- Identify elements of good practice for managing current climate variability and risks that may also contribute to managing future risks
- Identify opportunities for innovative approaches to manage climate risks and to strengthen climate resilience
- Identify cross-sectoral influences on WASH services and provide the impetus for engagement, collaboration and shared learning with stakeholders from outside the WASH sector
- Provide evidence on what amendments might be warranted in order to address climate risks and to strengthen climate resilience.

## Applying a climate

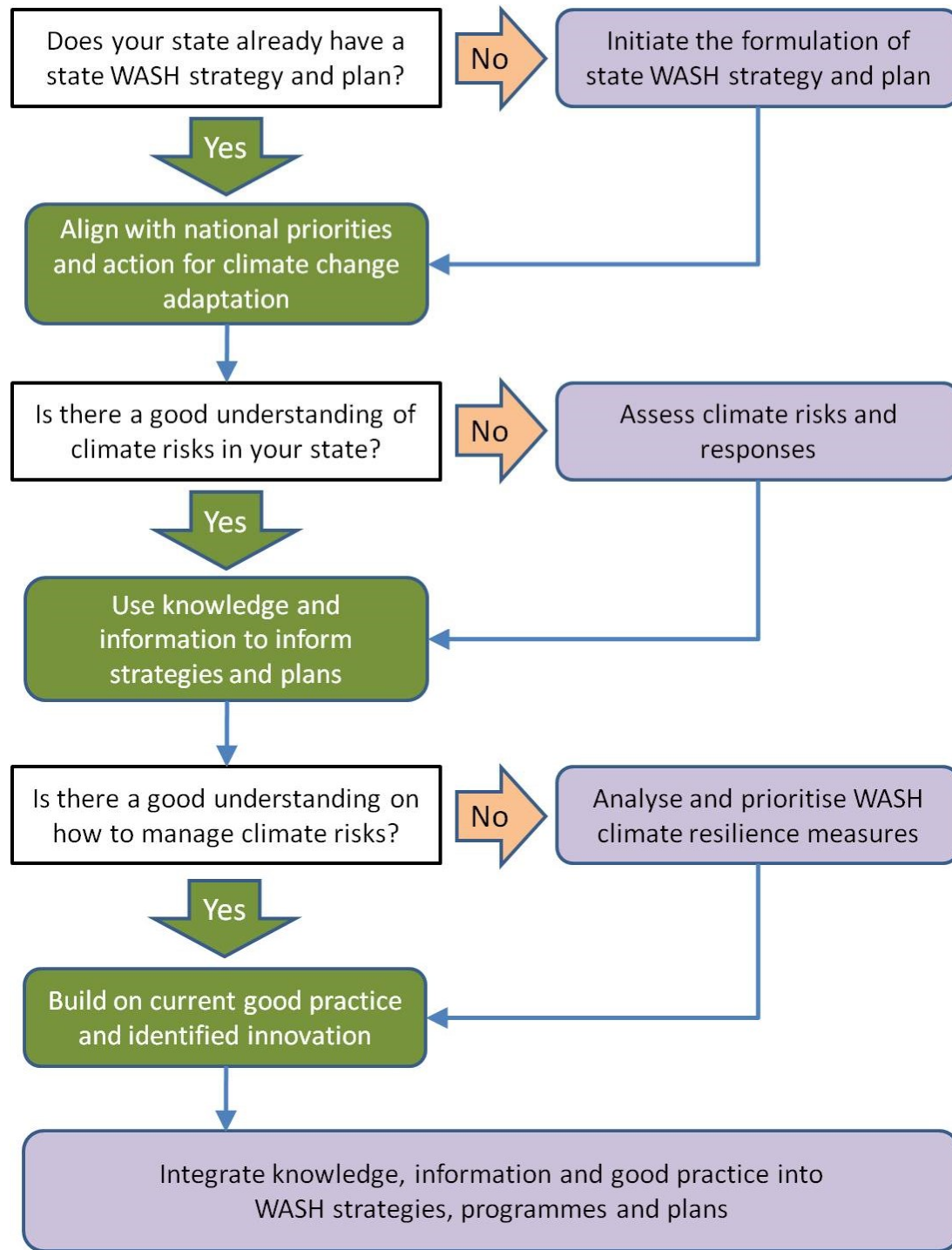
- Policy decisions informed by vulnerability mitigation potential
- Examine extent to which policy, strategy – be vulnerable to risks arising from climate \

# A stepwise approach to applying a 'climate lens'

Quick wins can be achieved by considering the following initial questions:

- Does your state already have a state WASH sector strategy and plan, and is it aligned with overarching national climate change and climate-related priorities and actions?
- Is there a good understanding of climate change impacts on the WASH sector, and has this knowledge and information been used to inform strategies and plans?
- Is there a good understanding of how to manage climate risks, and has good practice and innovation been built into strategies, programmes and plans?





# DOES YOUR STATE ALREADY HAVE A STATE WASH STRATEGY AND PLAN?

**If YES – Align with national priorities and actions for climate change adaptation**

Specific actions would be to:

- Review existing national climate change policies, strategies, plans and associated documentation to identify national adaptation and climate-related DRR priorities, noting in particular those that relate to, or have an influence on, the WASH sector
- Establish to what extent existing state WASH strategies and plans encompass and align with national climate change adaptation priorities, and in particular note any gaps or omissions
- Communicate and disseminate state climate change priorities relevant to the WASH sector among WASH ministries, departments and partner agencies at all levels of governance
- Work with WASH ministries and departments to align WASH strategies and plans with national climate change priorities
- Ensure realigned priorities are captured in outline plans for strategy implementation, including those for financing, budgeting, monitoring and evaluation.

# **DOES YOUR STATE ALREADY HAVE A STATE WASH STRATEGY AND PLAN?**

**If NO – Initiate the formulation of state WASH strategy and plan**

Specific actions would be to:

- Engage in WASH sector strategy and planning processes and ensure climate resilience becomes an integral component from the outset
- Make the case for climate resilience as an integral component of state WASH strategies and plans, drawing on evidence of existing climate impacts on WASH outcomes, and highlighting how climate change can further exacerbate these
- Engage in cross-sectoral dialogues, not simply within the WASH sector itself, to ensure factors outside of the WASH sector's realm of influence are taken into account within climate resilience strategies and plans.

# IS THERE A GOOD UNDERSTANDING OF CLIMATE RISKS IN YOUR STATE?

**If YES – Use knowledge and information to inform strategies and plans**

Specific actions would be to:

- Strengthen and supplement WASH situational analyses by incorporating climate resilience considerations
- Ensure the formulation of strategies and plans has been responsive to the impacts of climate variability and change, and do not inadvertently increase vulnerability
- Review priorities and ensure these consider communities and locations most vulnerable to climate risks
- Prioritise no/low regrets measures and approaches as these will help to manage current climate variability as well as future change
- Ensure cross-sectoral influences and actions are identified and taken into consideration as a mechanism to improve climate resilience.

# IS THERE A GOOD UNDERSTANDING OF CLIMATE RISKS IN YOUR STATE?

If NO – Assess climate risks and responses

Specific actions would be to:

- Gather evidence on the impacts of climate variability and change at the state level, including an analysis of climate hazards, vulnerabilities, exposure and adaptive capacity
- Draw on past experiences and benefit from previous studies and information on the impacts of climate variability and change
- Identify the most serious and plausible climate-related threats, and how these impact specifically on the WASH sector
- Reach agreement among WASH ministries, departments and their implementation partners on the most important climate risks, and how best to respond to these risks
- Increase understanding among state WASH ministries and departments, and their implementation partners, of the ways climate change influences WASH service delivery outcomes and response measures.

# **IS THERE A GOOD UNDERSTANDING OF HOW TO MANAGE CLIMATE RISKS?**

**If YES – Build on current good practice and identified innovation**

Specific actions would be to:

- Collate evidence on existing good practice and integrate recommended approaches into strategies and plans
- Maximise the use of approaches to influence and change behaviour to ensure this also supports the climate resilience agenda
- Ensure innovation benefits from lessons learned nationally and internationally, and from institutions specialising in the piloting and testing of innovative techniques and approaches
- Where appropriate, incorporate the piloting of approaches to test their effectiveness in managing climate variability and change
- Raise awareness among key WASH stakeholders on current good practice and innovative approaches for enhancing climate resilience.

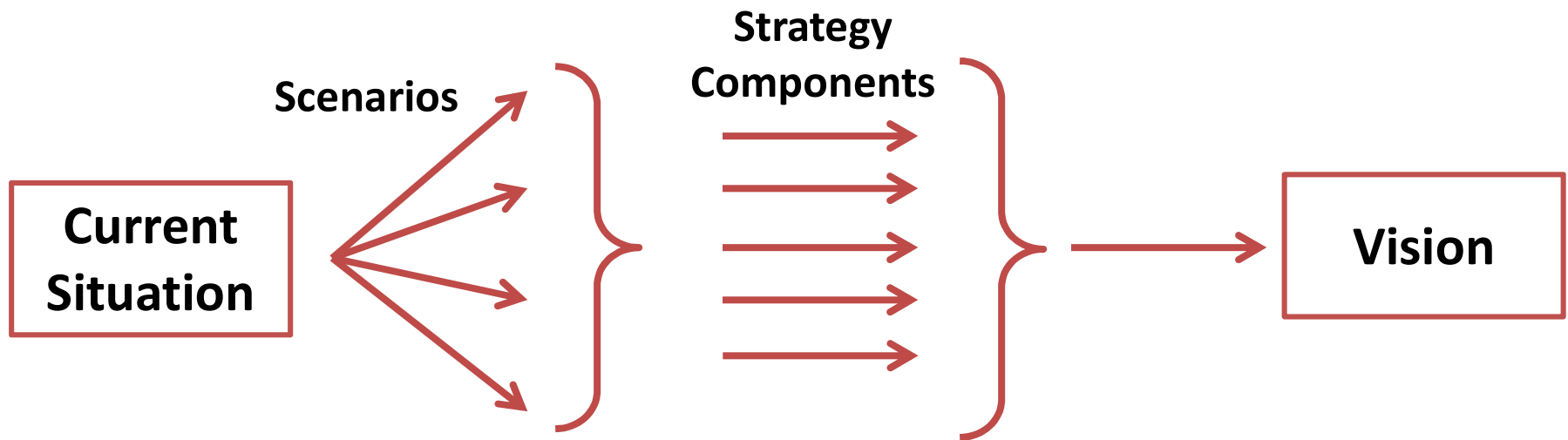
# **IS THERE A GOOD UNDERSTANDING OF HOW TO MANAGE CLIMATE RISKS?**

**If NO – Analyse and prioritise WASH climate resilience measures**

Specific actions would be to:

- Evaluate the performance of WASH facilities and services under existing climate hazards such as floods, droughts and storms
- Gather evidence from local stakeholders on what worked well and what did not during extreme events, and from community experiences of coping with historic climate variability
- Identify aspects or components of WASH facilities and services that contributed to robust performance and those that led to failure or under-performance under different climatic hazards
- Draw on identified national and international best practice and innovation, and contextualise and customise recommended approaches and solutions for your own state context
- Agree recommended approaches (e.g. for different hazard types) and incorporate recommendations into strategies and plans.

# Strategy development based on visioning and scenario building



# Climate change adaptation

The existing State Action Plans for Climate Change (SAPCC) offer opportunities for transformational adaptation and disaster risk reduction that the state can support.

## **The following principles of adaptation and DRR can be promoted:**

- Recognition that adaptation is place and context specific with no single approach for reducing risks (fully appropriate across all settings). Hence avoid making a scheme.
- Recognition that adaptation planning and implementation can be enhanced through complementary actions across levels, from individuals to governments.
- Recognizing and reducing vulnerability and exposure to present climate variability.



# Climate change adaptation

The existing State Action Plans for Climate Change (SAPCC) offer opportunities for transformational adaptation and disaster risk reduction that the state can support.

## **The following principles of adaptation and DRR can be promoted:**

- Adaptation planning and implementation at all levels of governance, recognizing diverse interests, circumstances, social-cultural contexts, and expectations.
- Recognition of elements of transformational adaptation and disaster risk reduction and support them in sectoral plans, PIPs etc.
- Planned allocation in state budget for scale up of adaptation & DRR through sectoral action.

