



# Building a Climate Resilient Kerala

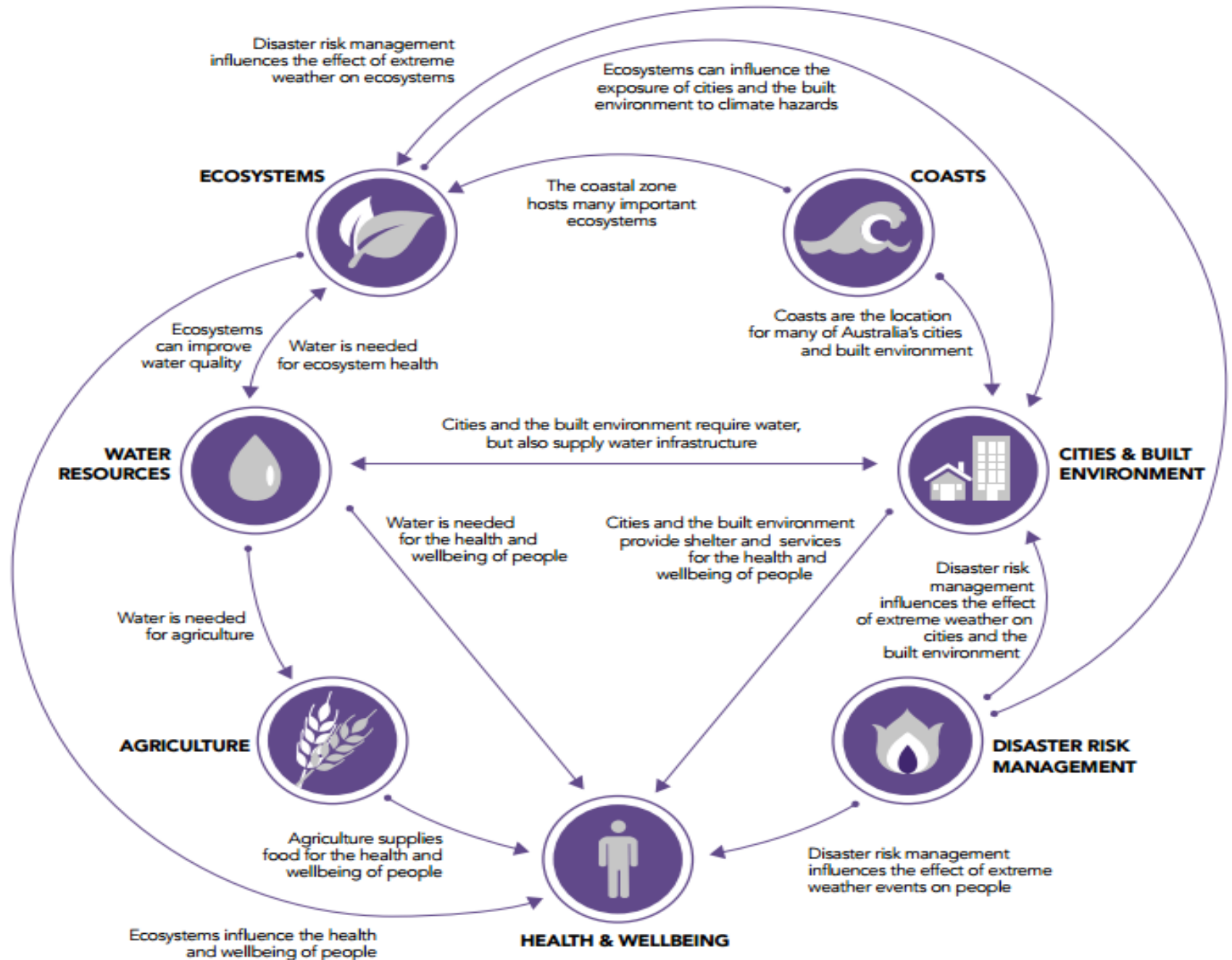


# Understanding resilience

- Ability to cope – community transition to individual adaptation to combat vulnerabilities
- Infrastructural capacity – economic, technological and knowledge
- Livelihoods and well-being – ecologically conscious and sustainable living in the 4 degree world



# Resilience building



# Global paradigms

- UNFCCC and UN frameworks (Paris agreement, Sendai framework for DRR, SDGs..)
- Green Climate Fund
- Multilateral agencies and CSOs (Stockholm Resilience Institute)

....

*Invested in aiding emerging economies, transition societies and vulnerable countries*

# National actions

- National Action Plans on Climate Change
- National Disaster Management Authority
- NITI Aayog
- Swacch Bharat Mission
- Smart cities and villages
- INDCs (Intended National Determined Contributions)

....

*Guiding framework for States to take lead in strategizing climate response*

# Kerala State – Decision making

- ‘Nava Keralam’ – Haritha Kerala, Aardram, LIFE, CERP
- People’s Planning
- Ecovillage development
- Suchitwa Mission
- State Action Plans on Climate Change and Disaster Management

....

*State’s response to understanding climate variability and responding to vulnerabilities*

# Kerala State - Capacity

- Decentralized governance
- Pro – environment and sustainable development governance
- Strong scientific institutions
- Large civil society organizations
- Public awareness and media

# Kerala State – Priority areas

- Agriculture
- Animal Husbandry
- Fisheries and coastal zones
- Forests and biodiversity
- Water
- Health
- Energy
- Urban front and transport
- Waste management
- Tourism
- Knowledge building and education

Haritha Keralam  
Aardram  
LIFE  
CERP, Saksharata mission  
Suchitwa Mission  
13<sup>th</sup> 5 year Plan  
SDMA Action Plan  
ANERT and EMC  
ICCS

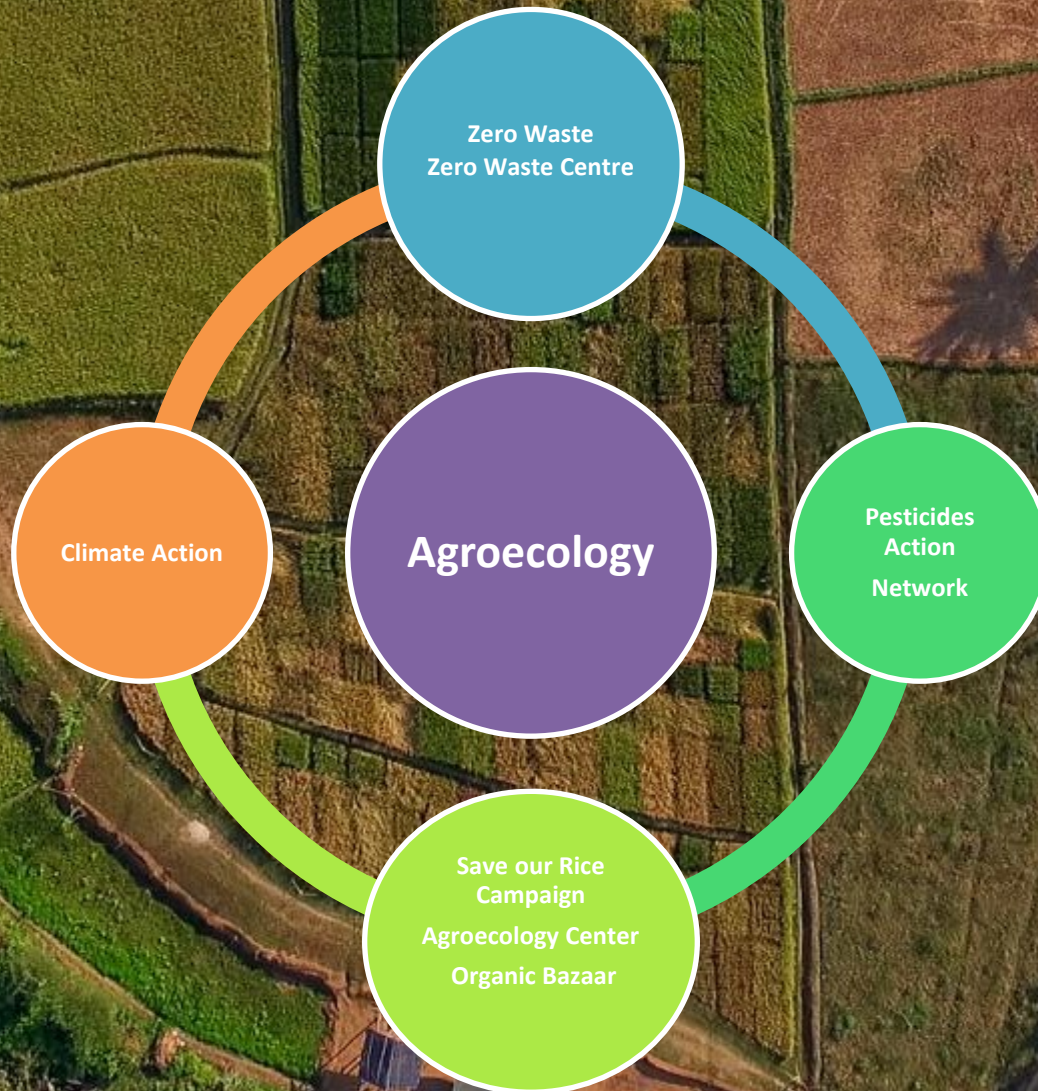
# Kerala State – Gaps

- Commissioned vulnerability assessments and climate related studies (GHG emissions, carbon footprints)
- Disaster Risk Reduction and Climate loss-damages
- Gender and Child focus
- Integrated engagement with Social Welfare and Justice departments
- SAPCC revision to shape the document reflecting State priority areas in action plans
- Existing knowledge from various sources (including LSGs) and projects to be accumulated and dovetailed with development agenda
- Focused intervention on water safety, transportation and forestry sectors
- Legal frameworks inconsistent with resilience agenda

# Opportunities

- LSG is the strength of Kerala which is to be maintained, strengthened and oriented for climate action
- Qualifying State Action Plans, Missions as adaptation responses and plans
- Integrating climate risks and realities in decision making
- Success of traditional and agroecological farming in already 1<sup>0</sup>C warmer world – a case for mitigation and adaptation
- Community based adaptation projects at village and corporations level (Carbon Neutral Grama Panchayats)
- Pitch small projects to prime as resilience building strategy

# About Thanal



# Climate Action

- **Thanal programme convergence as climate action and adaptation responses**
- **Research focus and policy analysis**
- **Focus in 2016**
  - **Climate resilient Kerala**
    - **Workshop for strengthening State Action Plan on Climate Change**
    - **Networking with change agents**
  - **Carbon Neutral Communities**
    - **Meenangadi as a pilot for Carbon Neutral Grama Panchayats**
    - **Frameworks and finance**